
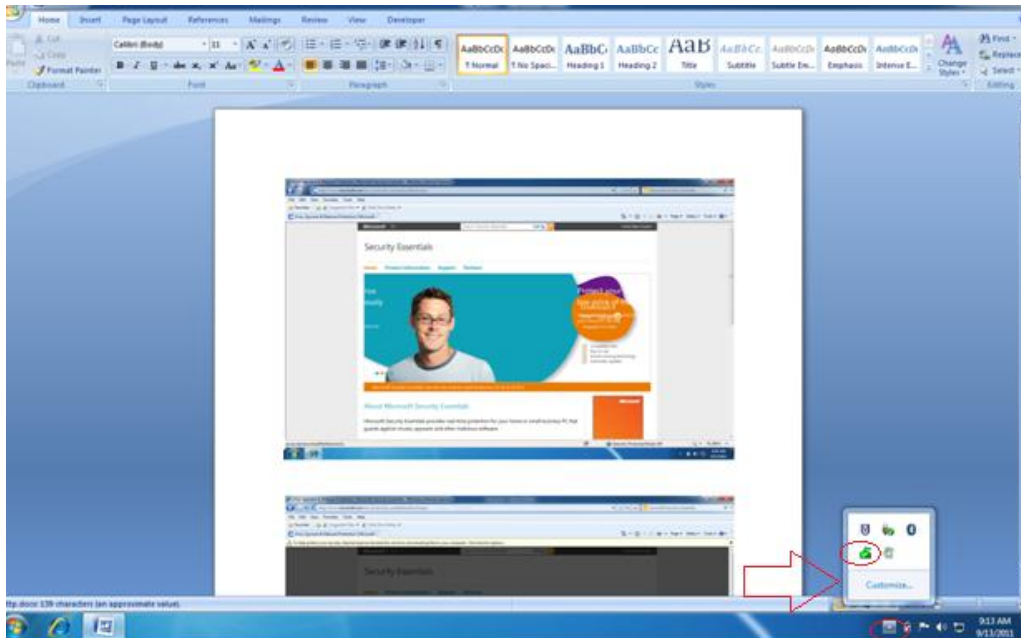


INSTALLING MICROSOFT SECURITY ESSENTIALS  
VIRUS PROTECTION SOFTWARE

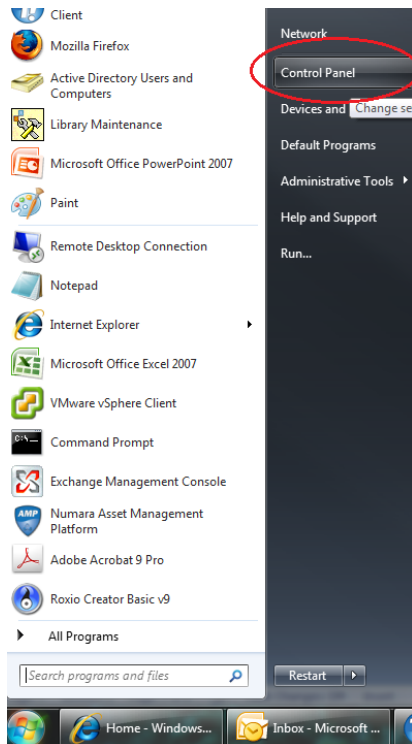
Check to see if MSE is already installed on your computer.

1. Check by the system clock for an “” icon

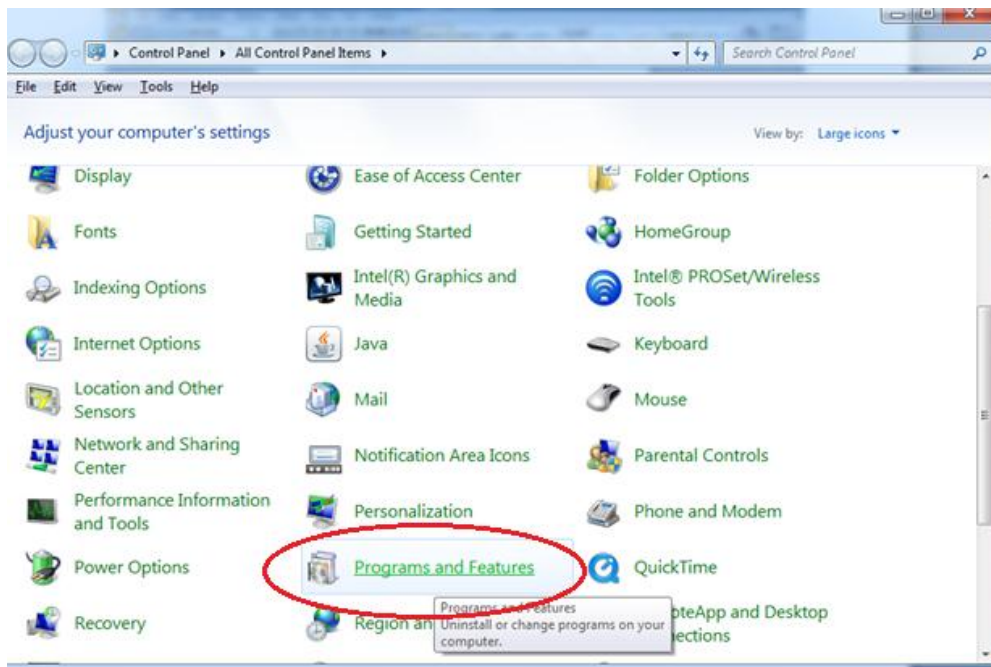


OR >

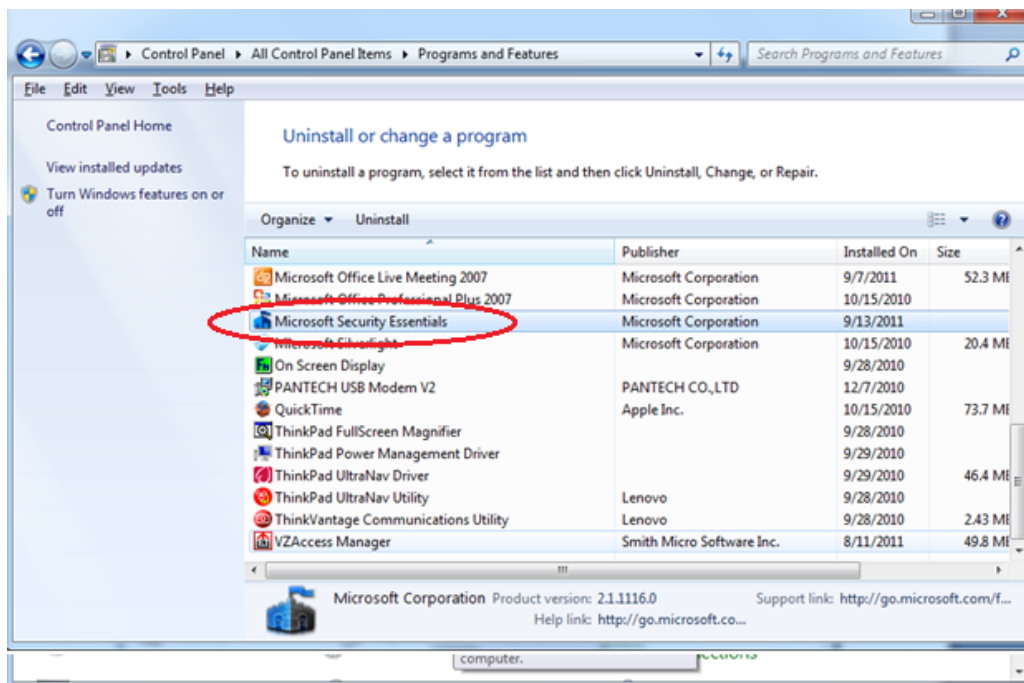
## 2. Or click on **Start > Control Panel**



## 3. Click on “**Program and Features**”



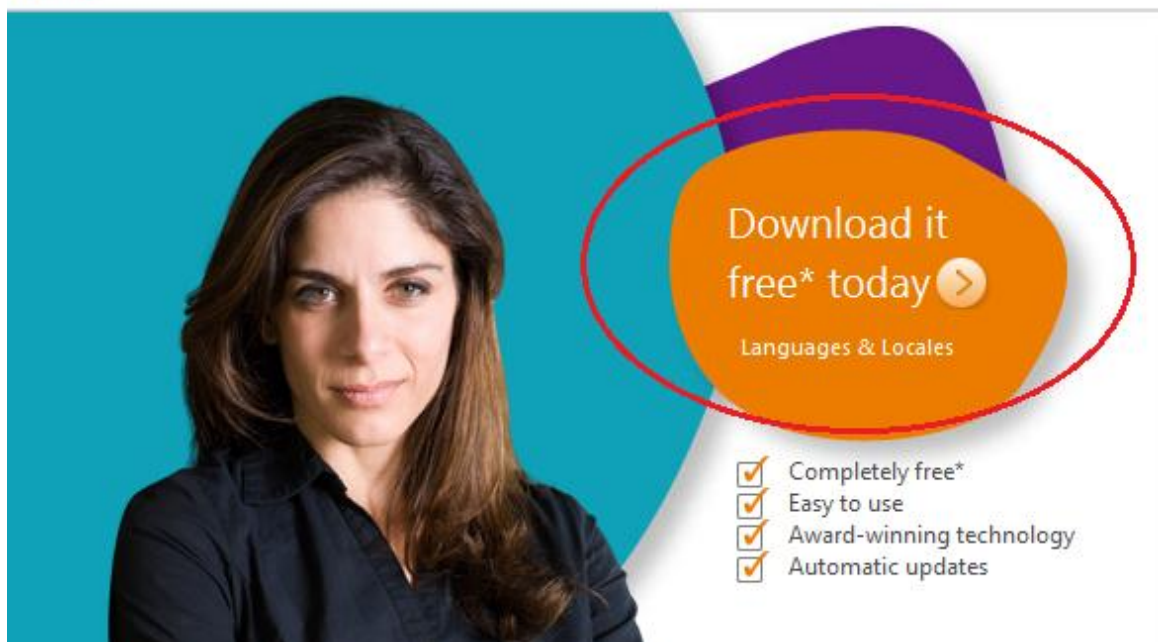
4. Check for **Microsoft Security Essentials**



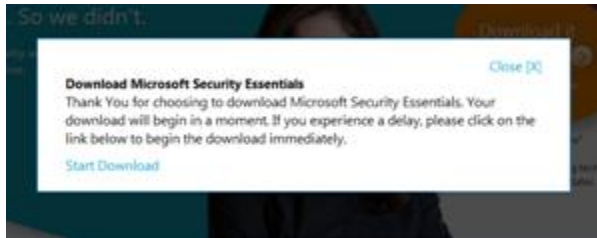
**Installing MSE**

1. Browse to [http://www.microsoft.com/en-us/security\\_essentials/default.aspx](http://www.microsoft.com/en-us/security_essentials/default.aspx)
2. Click on **"Download it free today"**

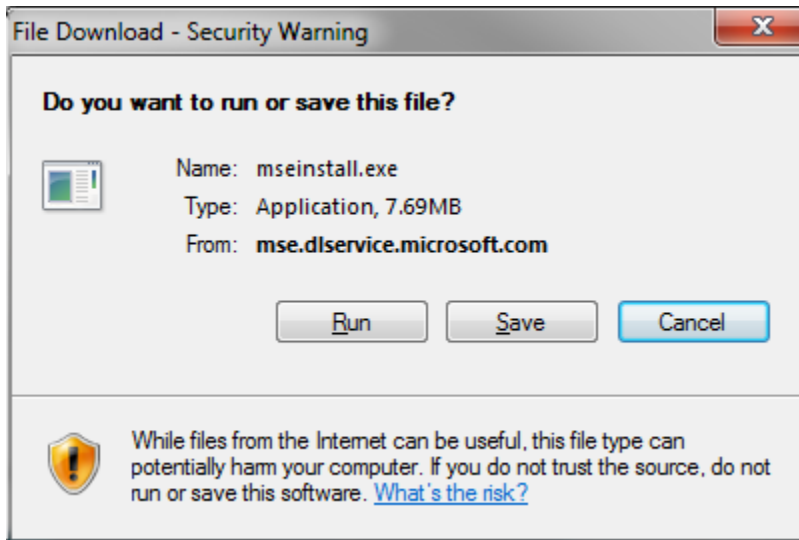
partners



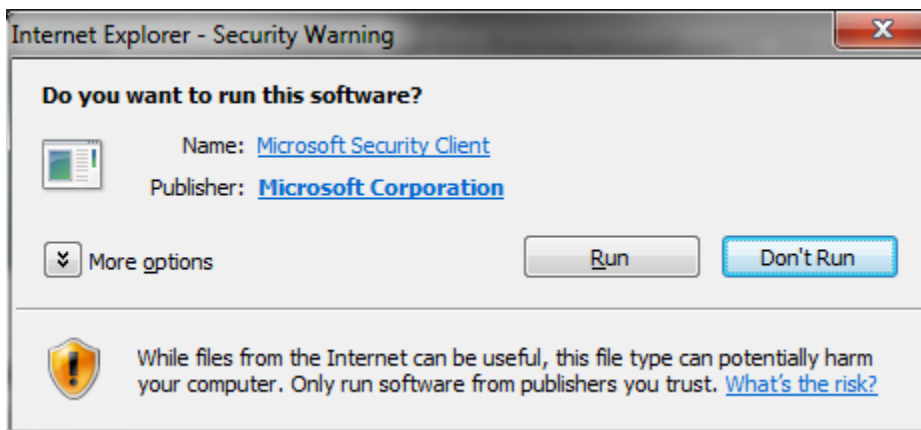
3. Click **“Start Download**



4. File Download – Security Warning dialog box will display. Click **Run**



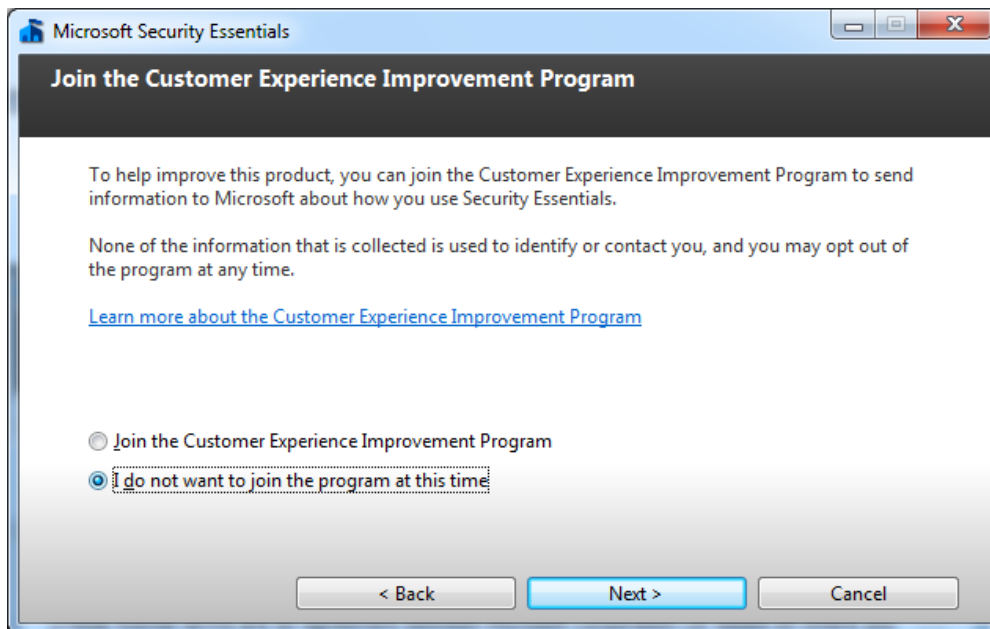
5. Internet Explorer – Security Warning dialog box will display. Click **Run**



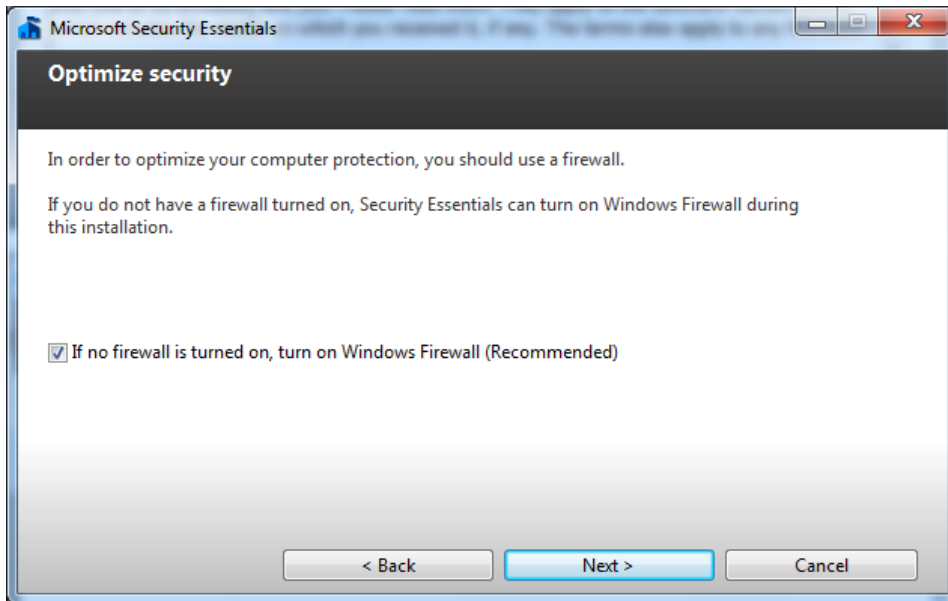
6. Microsoft Security Essentials window will display. Click **“I accept”**



7. Select **“I do not want to join the program at this time.”** And click **Next**.



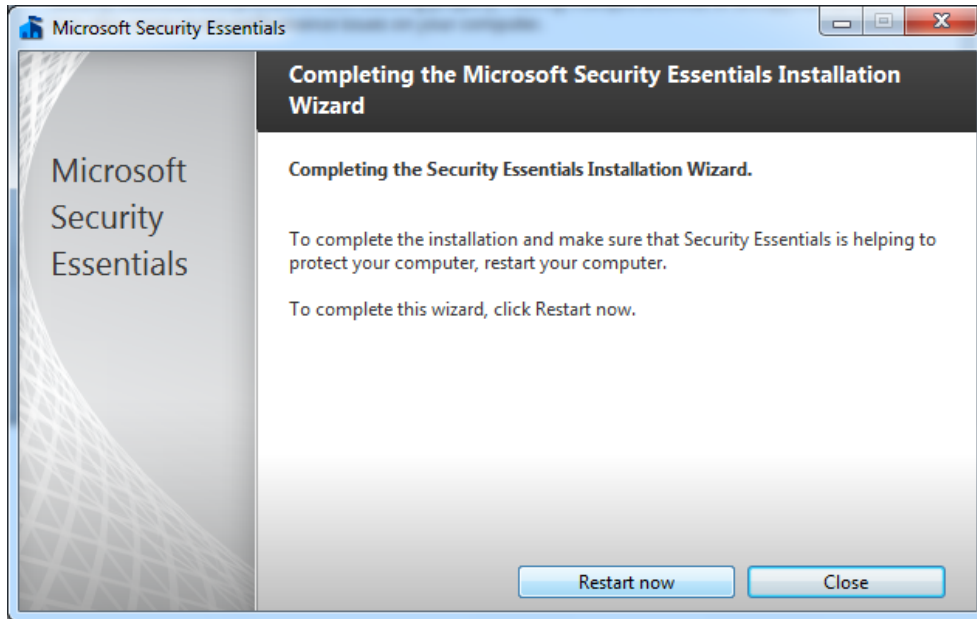
8. Check the box “If no firewall is turned on, turn on Windows Firewall.” Click **Next**.



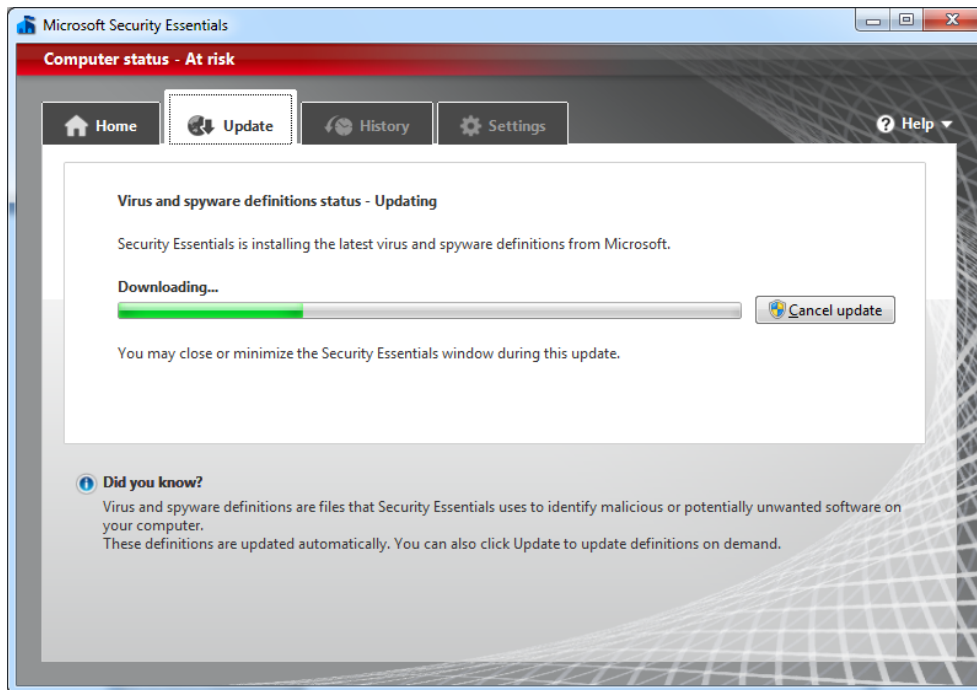
9. Click “**Install**”



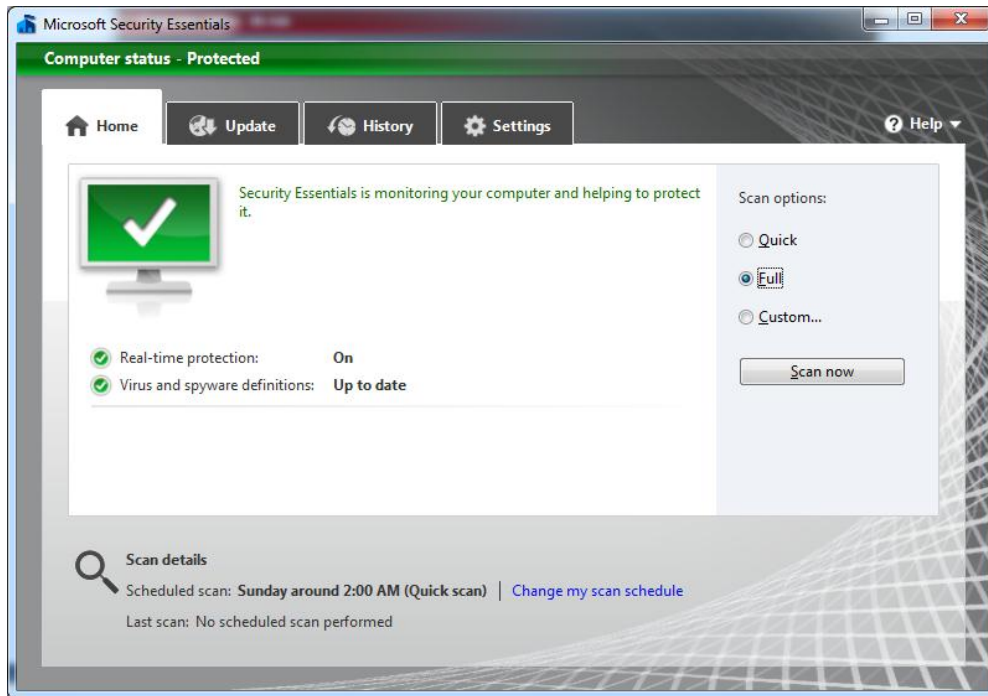
10. Click **“Restart now”** when prompted



11. After rebooting, MSE will start updating itself.



12. Once MSE is fully updated and working, your screen will have a green background.



13. Close the MSE window with the **Red X**. You will be returned to your normal desktop.