

## INSTALLING CITRIX ONLINE PLUGIN

### Installing the Citrix New Plug-in

1. Browse to <http://chicago.ngelaw.com> and click on Citrix.

NEAL ■ GERBER ■ EISENBERG



anet Home

tion

elcome to Neal, Gerber & Eisenberg LLP Extranet. The portal to your NGE applications. Please select from the pictures at the top of the page to enter that application.

2. Select the New Citrix System.

NEAL ■ GERBER ■ EISENBERG

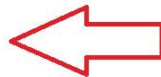


ix

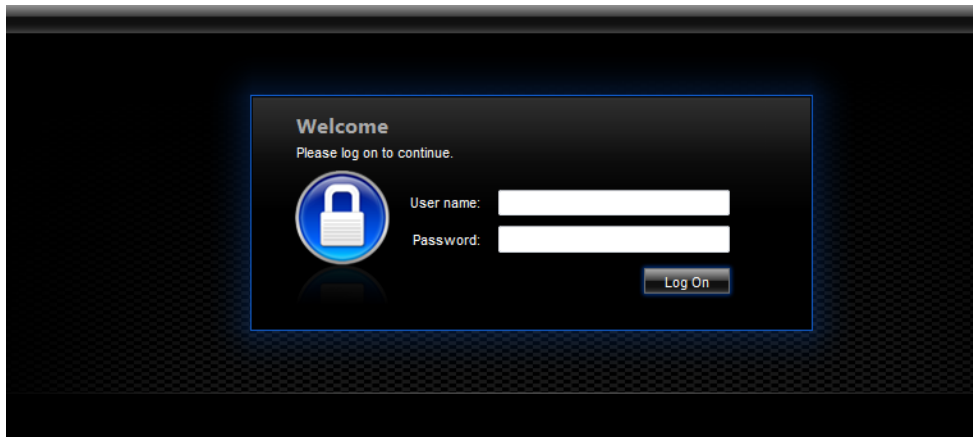
have not been contacted by the IT department to upgrade your Citrix account, please choose the Old Citrix option. If you choose the wrong option you will not cause any problems, but



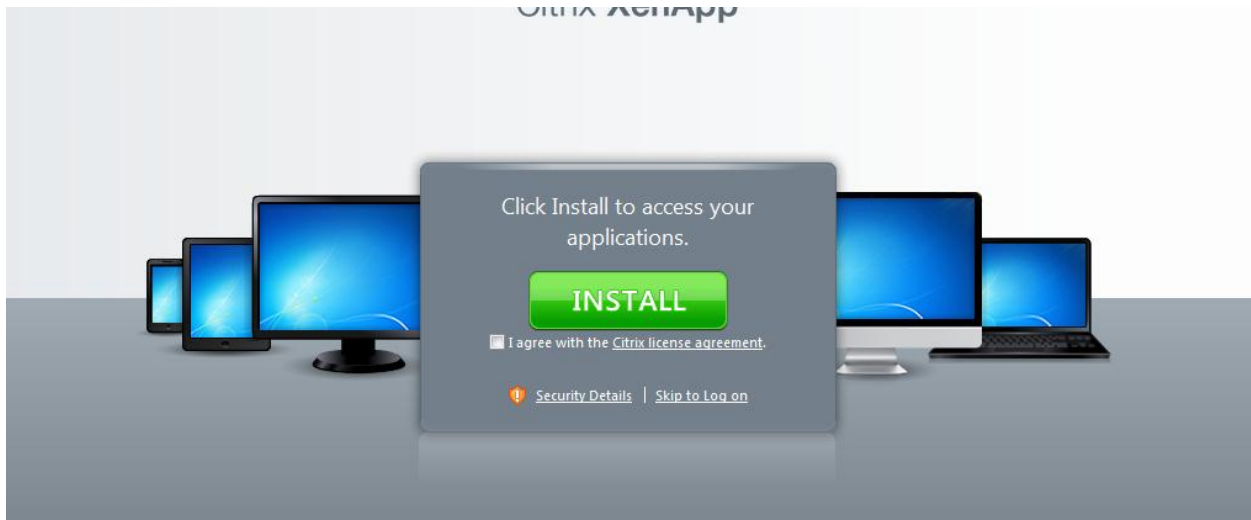
rix



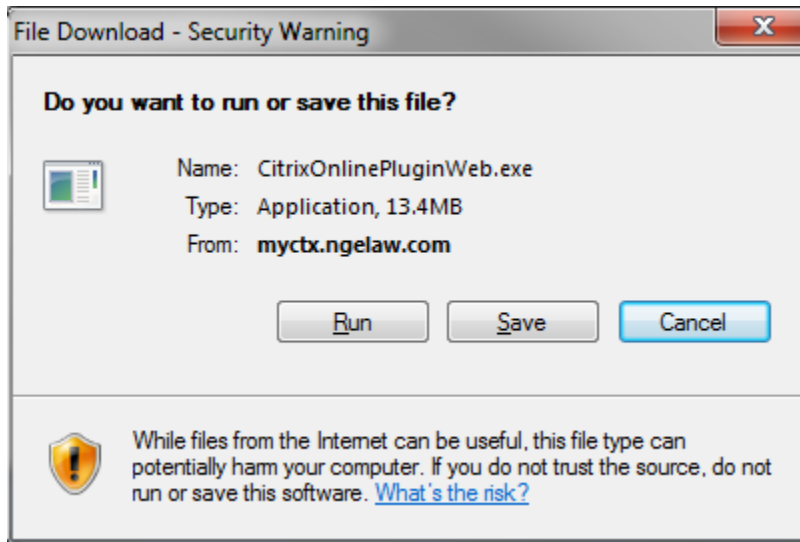
3. Enter your NGE credentials.



4. Check the box "I agree with the Citrix license agreement" and click **Install**.



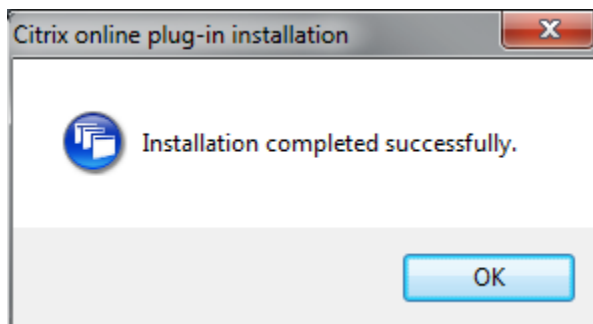
5. File Download Security Warning dialog box will display. Click **Run**



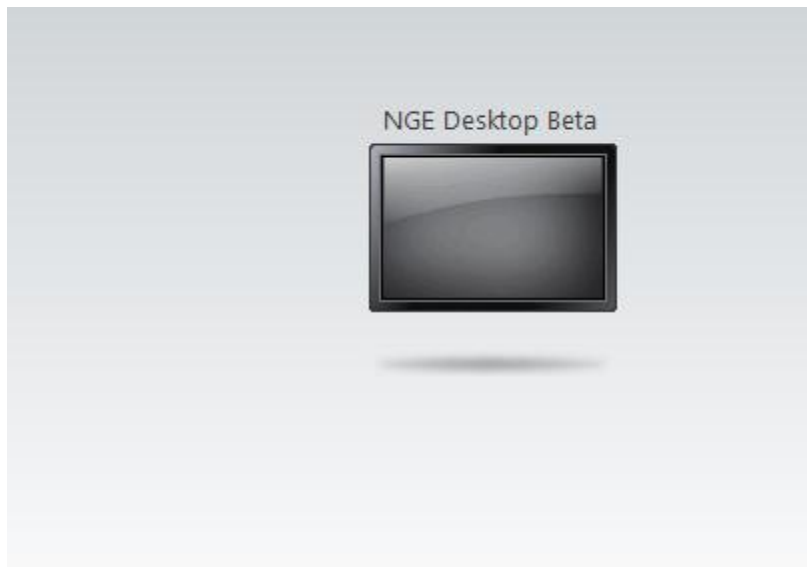
6. Internet Explorer – Security Warning dialog box will display. Click **Run**



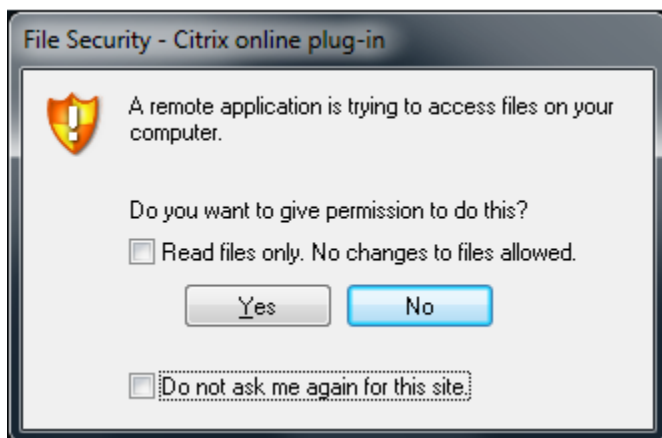
7. Citrix online plug-in installation window will display. Click **OK**



8. You should now see your published desktop.



9. Click the black monitor image to start your Citrix session.
10. If you see the following dialog box:
  - (a) Check the **Do not ask me again** box
  - (b) Click Yes



11. Your Citrix desktop will be displayed.